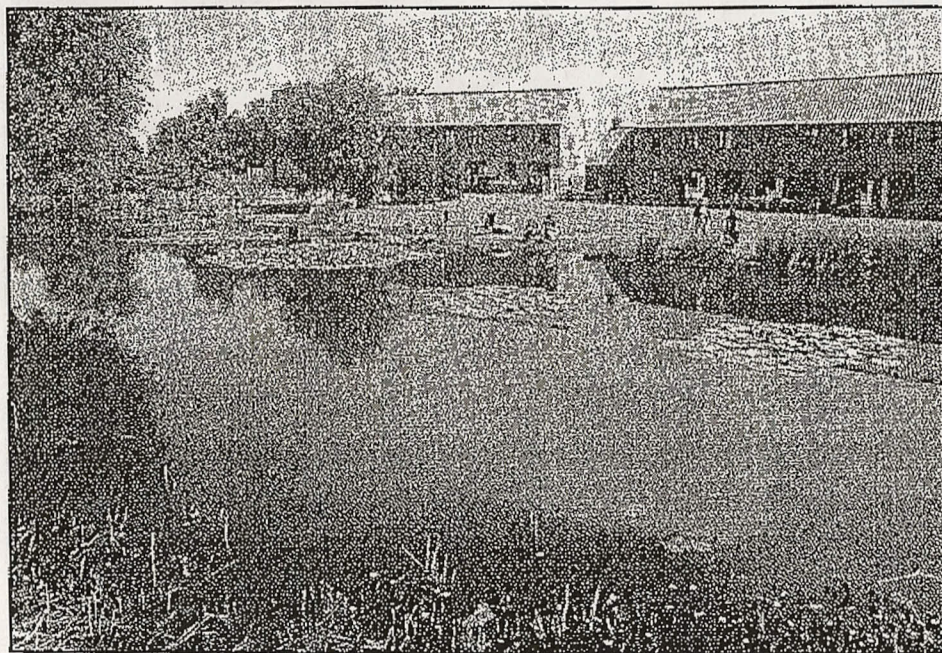


Tactical Briefing



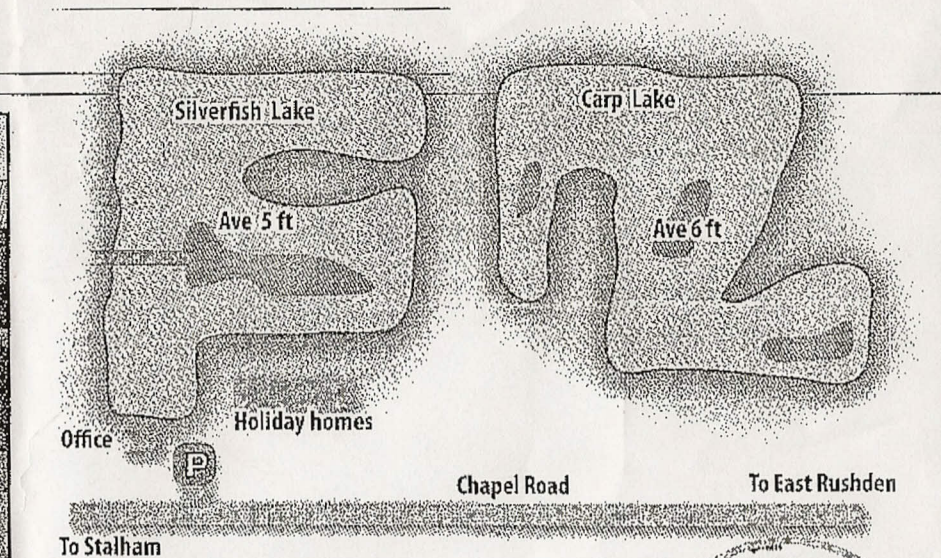
ST. GEORGE'S FISHERY, EAST RUSTON, NORFOLK

DESCRIPTION. These two lakes make a very interesting proposition for the day ticket angler. Carp Lake has three islands, and houses carp to 22 lb, with a 10 lb average, tench and bream to 7 lb, plus a few silver fish. The Silverfish Lake, one island contains roach and rudd to 2 lb, tench and bream to 7 lb plus carp.

TACTICS. Keep things as simple as you can here. On the Carp Lake pole

or waggler fish meat, corn or pellet for the carp, bream and tench. On the Silverfish Lake waggler fish bits of luncheon meat for a mixed bag. Fish maggot for lots of small silver fish. In the winter both lakes respond to a small feeder with maggot or a single grain of corn on the hook.

GOOD SWIMS. There is a feature on every swim here, take full advantage by fishing to it.



TOP TIP

At the moment fruit flavoured boilies are sorting out the better carp.

TICKETS. £7, £10 two rods. Tickets from the office on the way in. If closed, on the bank. Season (limited amount available) are £65. Fishing 8am to dusk only. No keepnets, barbless hooks only. Disabled access. Enquiries: 01692 583311. Anglian byelaws. Open all year.

LOCAL TACKLE SHOP. Broadland Angling and Pet Centre Ltd, Stalham, NR12 9AN. Tel: 01692 580959.

LOCATION. Leave Wroxham on the A1151 heading towards Stalham. Turn left, towards Bacton and Happisburgh, onto the B1159. Turn left at the next T junction and immediately left again, signed Brumstead Common. Follow this winding lane for two miles to East Ruston. The fishery is signed on Chapel Road.

SAT NAV. NR12 9AA.

